



Fletcher Road, London, W4 5AS

£525,000

WHITMAN & CO.

SALES · LETTINGS · COMMERCIAL

- Two/three bedrooms
- 788 sq ft of accommodation
- Private front door
- Bright and spacious maisonette
- Sought after residential road
- Close to amenities

Tenure - Leasehold
Length of lease - 944 Years remaining
Ground Rent - £12 pa
Service Charge - £0
Local Authority - Ealing
Council Tax - Band D

THE PROPERTY

This unique two/three-bedroom maisonette offers versatile living space within a rare standalone property.

Accessed via a private front door, the home features a bright 13'10" reception room, a well-appointed fitted kitchen, a shower room, and two/three bedrooms. Spanning 778 sq ft, the property enjoys excellent natural light throughout and offers adaptable accommodation suited to a variety of lifestyles.

This maisonette is ideally positioned on a sought-after residential street, within close reach of excellent transport links and a wide array of local amenities.

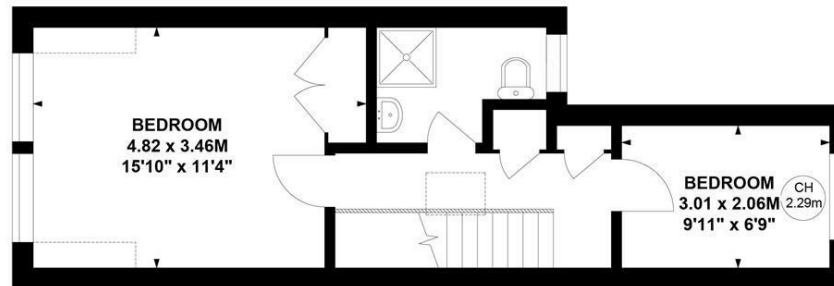
SITUATION



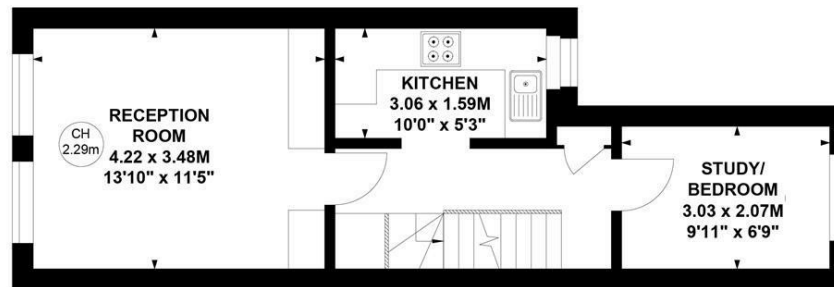
Fletcher Road, W4

Approximate Gross Internal Area
72.24 sq m / 778 sq ft

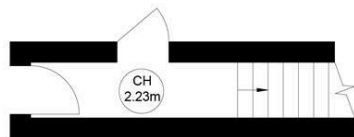
Key :
CH - Ceiling Height



Second Floor



First Floor



Ground Floor

Not to scale, for guidance only and must not be relied upon as a statement of fact.
All measurements and areas are approximate only